

IND :	0	22/07/22	Création
DATE			NATURE DE LA MODIFICATION



AFFAIRE : 19028	Coprover
Zoning influence CFO	

VERIFIE PAR : AB	CHARGE DETUDES : KI	DATE : 22/07/22	FOLIO N° : 1
			4





[illegible]

A diagram of a vehicle with a camera and sensor unit mounted on the roof. The unit is labeled 'Camera' and 'Sensor'. A green cone represents the field of view, and a green rectangle represents the sensor range. The sensor range is divided into two sections: a front section and a rear section. The front section is labeled 'Front' and the rear section is labeled 'Rear'.

BRUT  
5 m²

Diagram illustrating the 'Zone de déchargement' (unloading zone) for three different vehicle types (bus, truck, and car) at a station platform. The diagram shows the vehicle's position relative to the platform edge and the designated unloading area.

**ATELIER**  
3 970 56 m

**Sous répartiteur** — Quai d'expédition produit fini

Stockage Produit Finis 140,35 m<sup>3</sup>

Rénovation  
21,98 m<sup>2</sup>

## Répartiteur général

Mag Pose  
63.99 m<sup>2</sup>

Control



**ALPHA-BETA**  
BUREAU D'ETUDES

CHARGE D'ETUDES : K

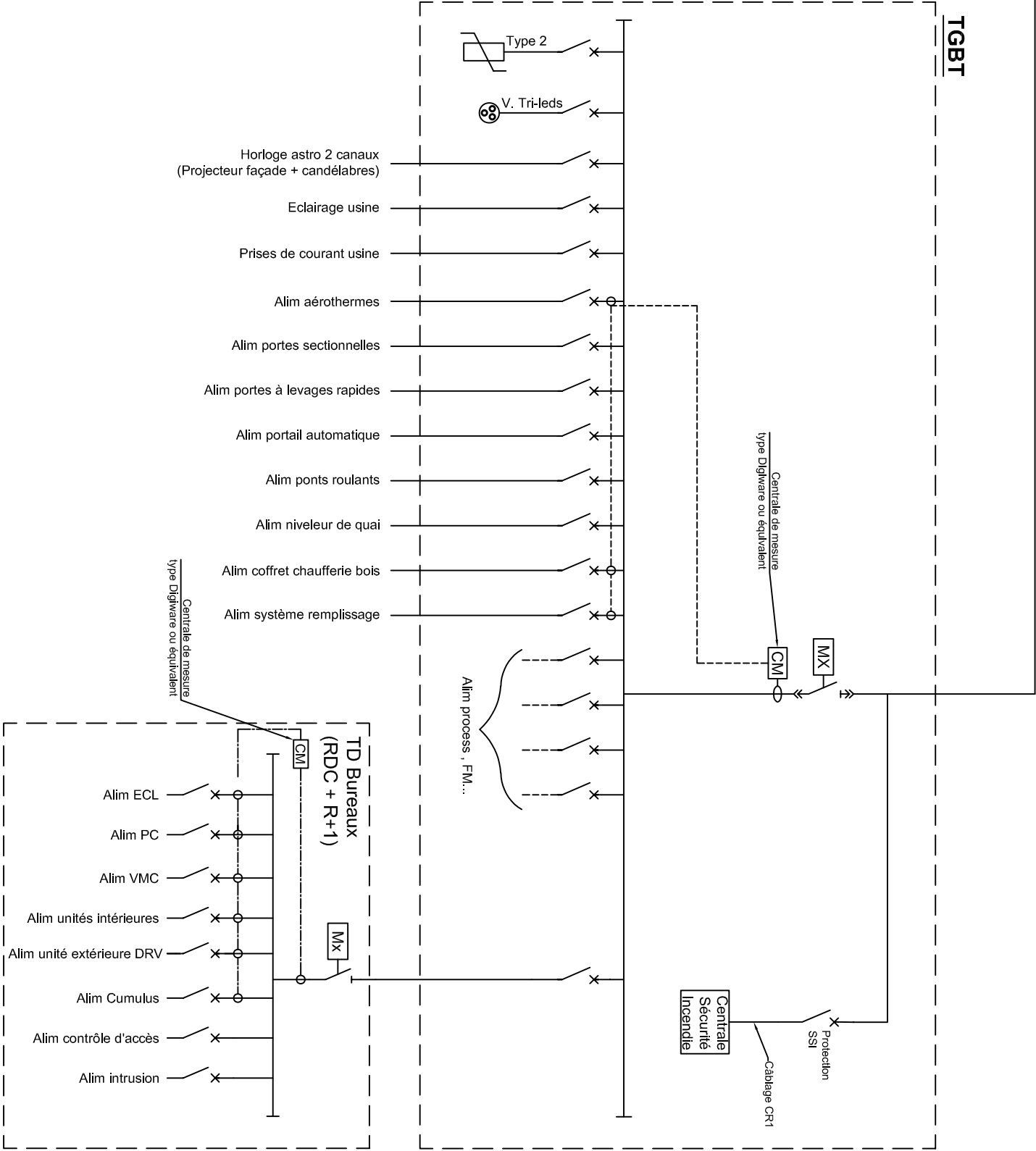
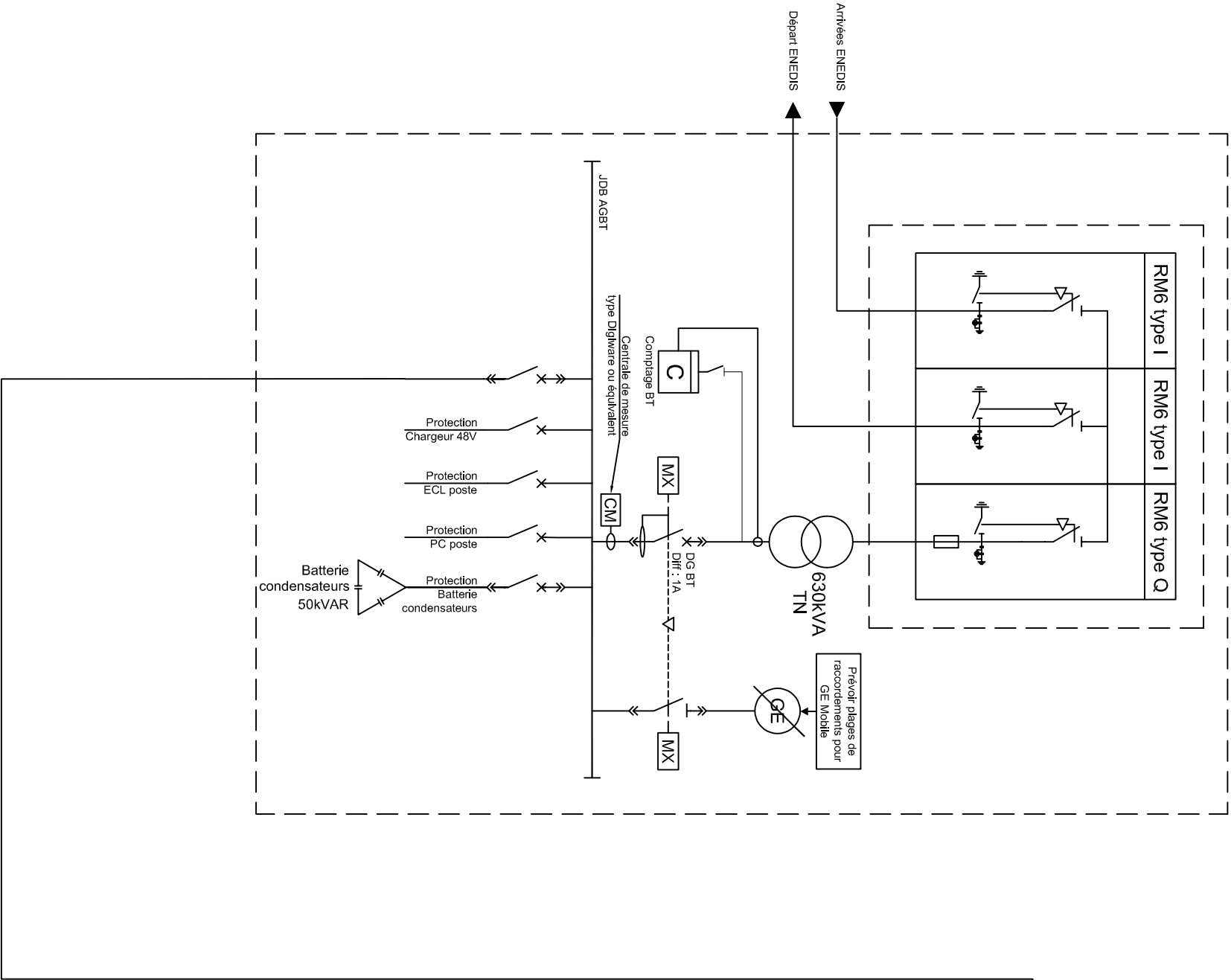
— 4 —

ND :	DATE	NATURE DE LA MODIFICATION
------	------	---------------------------

## NATURE DE LA MODIFICATION



Poste de transformation HTA/BT (limite de propriété)



0	22/07/22
IND :	DATE



AFFAIRE : 19028	Coprover
Synoptique de principe	
HT-BT	

VERIFIE PAR : AB
CHARGE DETUDES : KJ
DATE : 22/07/22
FOLIO N° : 4